



# Pretoria Gem & Mineral Club

established 1957

Affiliated to the Federation of Southern African Gem and Mineralogical Societies

Registered as non-profit organization – SARS 9830/639/14/3

**May 2019**

**Pretoria Rockhound Digest**

**Pretoria Gem and Mineral Club**  
P.O. Box 36 888  
Menlo Park  
Pretoria 0102

**Clubhouse:** no. 29, 26<sup>th</sup> Street, Menlo Park  
Saturdays 11:00–15:00, Thursdays 18:00– 21:00  
**Website:** [www.pgmc.co.za](http://www.pgmc.co.za)  
**Bank:** ABSA Bank, Acc. No. 405 584 9839

Chairman: Willem Vorster, 076 612 4888  
[wcs.vorster@gmail.com](mailto:wcs.vorster@gmail.com)  
Vice-Chairman: Bernard Strydom, 074 850 5683  
[bernardstrydom@gmail.com](mailto:bernardstrydom@gmail.com)

Treasurer : John Morgan

Admin.: Heidi Naudé, 072 923 2180  
[adelheid.naude@gmail.com](mailto:adelheid.naude@gmail.com)



\*\*\* Swop & Sell and Social

**4 May**

\*\*\* Silversmithing Course

**date t.b.c.**

\*\*\* Club Outing to Olly Roon

**date t.b.c.**



The Cullinan Mine run by Petra Diamonds has produced another massive 425.10 ct, type D diamond on 29 March 2019.

The most famous find from this mine remains the 3106 ct "Cullinan"; discovered in 1905 it is still the world's biggest rough diamond.

The stone was cut in two pieces and adorns the British Crown Jewels.



Photos courtesy of maroela-media.

## Programme for May


(as at 30.04.2019)

2 May	Silversmithing Workshop open	18:00 – 21:00	Bernard Strydom, 074 850 5683
<b>4 May</b>	Lapidary and Silversmithing Workshop open <b>Swop &amp; Sell and Social</b>	11.00 – 15.00	Duty Members
9 May	Silversmithing Workshop open	18:00 – 21:00	Bernard Strydom, 074 850 5683
<b>11 May</b>	Lapidary and Silversmithing Workshop open <b>Committee Meeting</b>	11:00 – <b>14.30</b> 15.00 – 16.30	Duty Members Committee Members
16 May	Silversmithing Workshop open	18:00 – 21:00	Bernard Strydom, 074 850 5683
<b>18 May</b>	<b>Silversmithing Course – confirm with Bernard</b> Lapidary Workshop open	10:00 – 15.30 11.00 – 15.00	Bernard Strydom, 074 850 5683 Duty Members
<b>19 May</b>	<b>Lapidary Sunday – confirm with Bernard</b>	08:00 – 13:00	Bernard Strydom, 074 850 5683
23 May	Silversmithing Workshop open	18:00 – 21:00	Bernard Strydom, 074 850 5683
25 May	Lapidary and Silversmithing Workshops open	18:00 – 21:00	Duty Members
30 May	Silversmithing Workshop open	18:00 – 21:00	Bernard Strydom, 074 850 5683



## Duty Roster



May 2019	4	11	18	25	 Brilliant Diamond
Open – 11:00 am	<b>Willem</b>	<b>Willem</b>	<b>Bernard</b>	<b>Willem</b>	
Duty Team	Peter Beresford Yolanda Keyter	Alan Crawford Dina Crawford	Oliver Green Anita Havenga	Lex Krabbendam Joanne Fidos	
Close – 15:00 pm	<b>Willem</b>	<b>Committee</b>	<b>Bernard</b>	<b>Willem</b>	

June 2019	1	8	15	22	29
Open – 11:00 am	<b>Dieter</b>	<b>Willem</b>	<b>Bernard</b>	<b>Heidi</b>	<b>Alan</b>
Duty Team	Dieter Heinichen Linda Stone	Jan Oliver Joey Oliver	Willem Vorster Karin Mayerl	Peter Beresford Heidi Naude	Alan Crawford Dina Crawford
Close – 15:00 pm	<b>Dieter</b>	<b>Committee</b>	<b>Bernard</b>	<b>Heidi</b>	<b>Alan</b>




We still need **members** to serve on the **duty teams** and urge **all our members to avail themselves for administrative and/or machine duty**; training will be provided.

Please advise Willem or Bernard if you are willing to help, thank you.



## 1. Membership Fees 2019

	R 500	Principal Member
	R 450	Pensioner (over 60's)
	R 100	per additional Family Member
	R 30	Joining Fee (new members only)

Only fully paid-up members are entitled to receive the club's correspondence, attend courses, use the club's workshop facilities and participate in club outings.

Payment should be made to Pretoria Gem & Mineral Club, ABSA Bank, account no. 405 584 9839, or cash at the clubhouse (Thursdays or Saturdays).

A very warm welcome goes to our new members who joined recently:

☺☺ **Bernard & Magdel Bekker** and **Esti & Emma Viljoen**. ☺☺

May your association with our club be productive and enjoyable.

## 2. Personals



**Get Well Wishes** go to **Dieter Schidlowski** who had to undergo another operation this week. Dieter, we all send you our sincere wishes for a full and speedy recovery and hope to see you and your minerals and jewellery stand at the clubhouse soon again.



A very big **Thank You** goes to **Hannie Schönberger** for donating her late husband's workshop machinery to the club. It is never an easy decision to part with something so meaningful and full of good memories. Hannie, we will make good use of the machines either in the clubhouse or at the next auction.

## 3. Ongoing Reminders: Indemnity Book and Safety Glasses



Please remember to sign the **Indemnity Book** at the duty desk every time you visit or work in the club's workshop. The book is kept at the duty desk.

**Duty members** – please check and ensure that everybody signs accordingly.



**Safety glasses** are **compulsory** for everyone working on the lapidary grinders, polishers and trim saws. Safety glasses are for sale at the duty desk or any decent hardware store. Members must bring/keep their own safety glasses.

## 4. For Sale



**Dieter Schidlowski** has various **workbenches** and **silversmithing tools** and other related equipment **for sale**.

Please contact him at 072 395 9769 for details or to make an appointment to view, he stays in Lyttelton Manor, Pretoria.

You can also talk to him directly on Saturdays at the clubhouse for details.

## 5. Swop & Sell and Social



The next **Swop & Sell Open Day** will be held on **Saturday, 4 May 2019** from 11.00 am onwards at the clubhouse; all dealers welcome.

Members are invited to bring their own minerals, rocks or other related items to swop or sell. Bring your family/friends and introduce them to our club and hobby.

Photo left: Dieter Schidlowski always creates lots of interest at his mineral and jewellery tables.

## 6. Silversmithing Course

The Silversmithing courses are usually planned for the 3<sup>rd</sup> Saturday of each month; unfortunately no details have been made available at the time of going to print for the next course; please check directly with Bernard at 074 850 5683.

Look at the beautiful items made by **Gloudi Myburgh** at the last course (photo courtesy of Bernard Strydom).



## 7. Faceting Classes – Saturdays



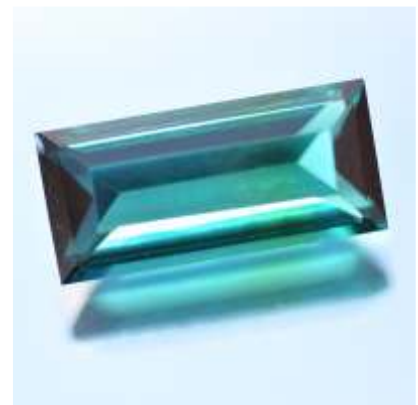
Garnet cut by Len Freeman

Want to learn how to facet gemstones like these?

Then contact our **Peter Beresford** at 064 384 4514 to book your a class on a Saturday at the clubhouse.

**Beginners and Advanced welcome!**

(Photos courtesy of Len Freeman, Cape Town Club)



Tourmaline cut by Len Freeman

Tuition, faceting machines, laps and polishing powders are supplied by the club – working fee/session = R 30. Faceting material (mainly Quartz varieties) will be available for sale.

8. **Sugilite** – Article by Joel E. Arem, Ph.D., FGA, Donald Clark, CSM IMG, International Gem Society (IGS)

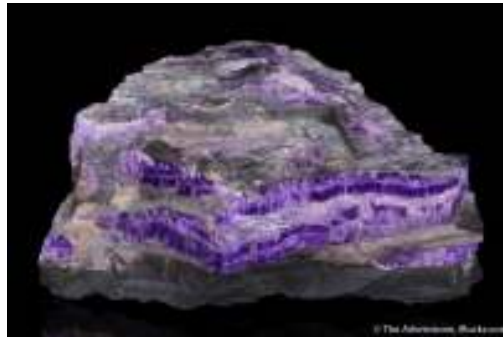
What is the color of sugilite? Grape jelly purple is a good description. More popular among consumers in Asia than North America, this is a very rare and beautiful opaque gem material with an unusual appearance. Outside of Asia, sophisticated gem shoppers haven't shown great interest in sugilites. Perhaps younger consumers in North America and other parts of the world will find this material's bold, striking color more attractive. Of course, its rarity may appeal to collectors.

Discovered in 1944 on Iwagi Islet in southwestern Japan, the first known sugilites were actually tiny, yellow crystals. They had no gem value. In 1955, some dark pink prismatic crystals were found in central India. However, this material wasn't cuttable.

In 1975, a core-drill sample from a manganese mine near Hotazel, South Africa revealed a thin seam of sugilite. This material had enough manganese content to give it a deep purple color. Small but significant, the deposit became the first source of gem-quality sugilite and launched the gem's now famous association with purple. (Some specimens can approach an amethyst-like color).



Sugilite, "Royal Azel." Photo by TIS0421. Licensed under CC By-SA 3.0



This South African specimen displays royal purple bands of parallel, fibrous, and very chatoyant sugilite, alternating with bands of lavender sugilite with an almost wrinkled foil appearance.

It also contains thin bands of gray-black manganese shale.

11.2 x 10.9 x 4.7 cm, N'Chwaning III Mine, Kuruman, Kalahari MN Field, Northern Cape Province, South Africa.

© Rob Lavinsky, www.iRocks.com. Used with permission.

In 1979, a massive deposit of sugilite estimated at 10-20 tons was found near Hotazel. Unfortunately, it lies 3,200 ft underground. The combination of the technical challenge of mining the material and the limited demand for sugilite means much of it remains underground. Half of the deposit may have the opaque, grape jelly color of known gem-quality sugilites. However, a very small percentage, perhaps 0.1%, may be translucent. Known as "sugilite gel," this material is extremely rare and highly prized.

A number of trade names for sugilite have emerged. Material more lavender than purple is sometimes called "Royal Lavulite." Hotazel, South Africa has inspired names such as "Royal Azel" and "Royal Lazelle." The Wessels Mine itself has also inspired the name "Wesselite." Variations of the name "Cybelene" are also given to sugilites, perhaps alluding to the myth of Cybele and Attis and its connection to the flower violet.



Sugilite: Kuruman, South Africa (gem 3.66). Photo © Joel E. Arem, PhD, FGA. Used with permission.

The most important factor in grading sugilite is color. The deepest color receives the highest grade.

A mottled appearance under close inspection doesn't affect the overall value, provided the overall color remains deep. However, lighter areas mixed with dark purple will lower the value.

Sugilite is available in fairly large sizes. Gems over ten carats are common and receive no additional value per carat. Translucent sugilite isn't yet available in sufficient quantities for market values to be established.

Other colours include light brownish yellow; lavender; intense reddish violet (manganiferous) purplish and dark rose-red.

## 8. IGS (International Gem Society) – Extract from an article published on Sugilite, continued...

Identifying Characteristics: deep purple, grape jelly sugilites get their color from traces of manganese and may resemble sodgianite gemstones. However, sodgianites contain traces of titanium and zirconium, which sugilites lack. A chemical analysis can distinguish the two species. Note that sodgianite is a much rarer mineral than sugilite and far less likely to be found either cut or carved.

Another rarely encountered gemstone, purpurite can show a purplish rose color similar to sugilite. However, purpurites have a higher specific gravity (SG) than sugilites.

Synthetics: a wide variety of gemstones have been used to simulate or imitate the appearance of sugilites. Gem labs have reported instances of dyed marble, dyed quartzite, dyed magnesite, and dyed and heated beryl confused with or presented as natural sugilites.

Consumers can easily find so-called “synthetic sugilite” for sale online. However, this material is most likely an imitation, not a lab-created version of actual sugilite. In these cases, “synthetic” means “fake” in the popular sense. Buyers beware.

Enhancements: Sugilites generally receive no treatments or enhancements. However, heating may lighten some dark material.

Notable sources include the following:

- *Wessels Mine, Kuruman district, near Hotazel, South Africa.*
- *Iwagi Islet, Japan.*
- *Madhya Pradesh, India.*
- *New South Wales, Australia; Canada; Italy; Tajikistan*

Care: With poor cleavage, a hardness of 6-6.5, and a tough tenacity, sugilites can make durable gemstones. However, protective settings are advisable for preventing scratches, especially if this material is worn as a ring. Otherwise, these gems require no special care.



Faceted sugilite, cut by Mark Oros of Hashnu Stones & Gems. Design: Sakura 96 (modified) by Marco Voltolini. 20.5 cts, 18 mm x 17 mm x 12 mm. © [Hashnu Stones & Gems](#). Used with permission.



This intarsia by Jim Kaufmann consists of bands of malachite, sugilite, opal, and fire agate. Photo © All That Glitters. Used with permission



Sugilite ring with scrollwork. Jewelry and photo by Jessa and Mark Anderson. Licensed under CC By 2.0.

**The International Gem Society (IGS) is the world's top resource for gem professionals, enthusiasts, and industry content.**

The opinions expressed in this newsletter do not necessarily reflect those of the PGMC Committee. This newsletter is the property of the Pretoria Gem and Mineral Club; articles/photos may not be re-produced without the written permission of the Editor.